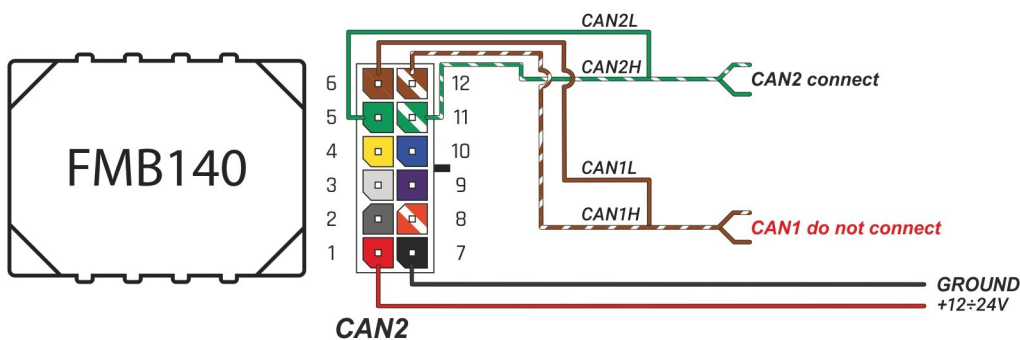


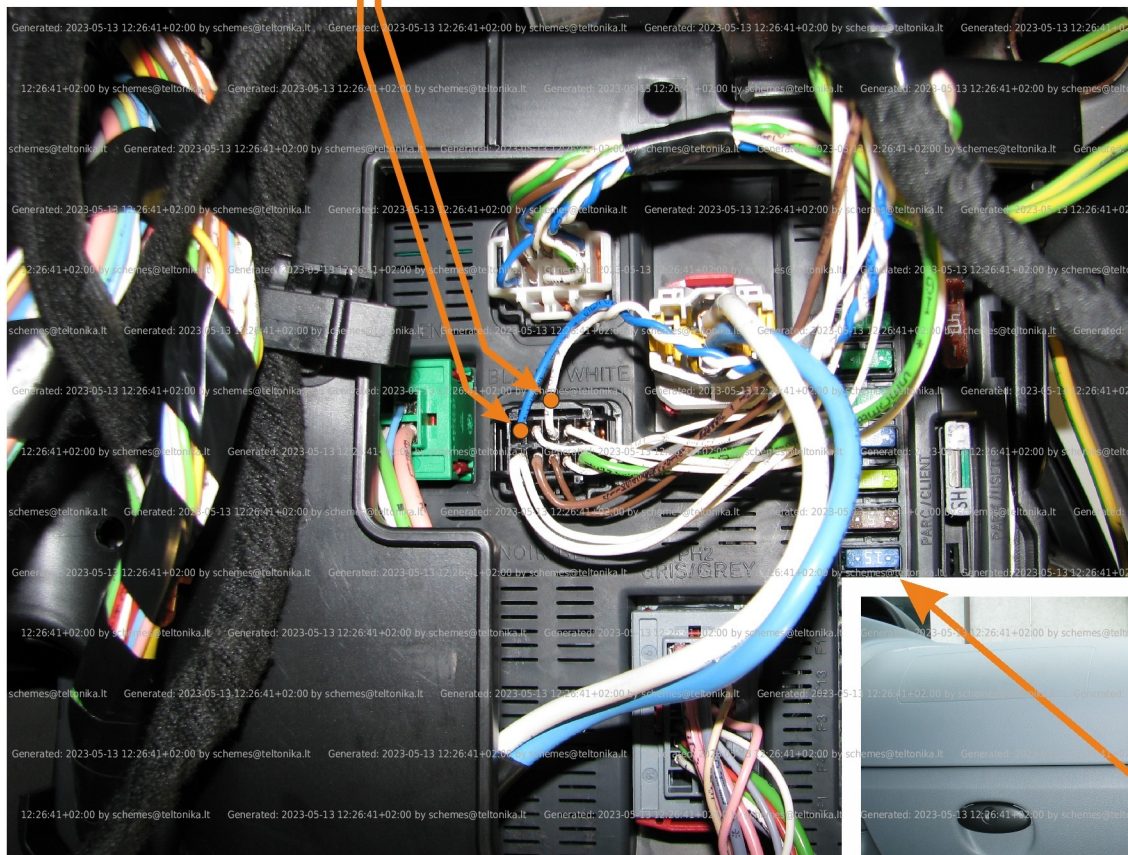
Brand, Model	Device: FMB140 LV-CAN	Year:	Rev.:
FIAT SCUDO		2014→	03
Version: (without factory alarm)	program №: 11193 from: 2017-09-01		



CAN2
 black 10PIN connector
 blue pin10 CANL
 white pin8 CANH
 black 10PIN connector

Program 193 only for cars without factory alarm

When connecting, you should look at the pin number because the color of the cables may vary



Flags:



General parameters:

- Total mileage of the vehicle (dashboard)
- Vehicle mileage - (counted)
- Total fuel consumption - (counted)
- Fuel level (in percent)
- Engine speed (RPM)
- Engine temperature
- Vehicle speed